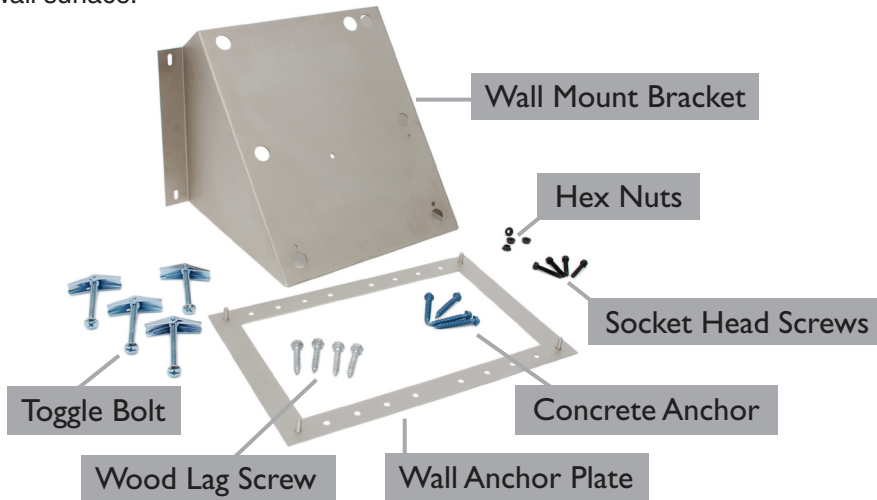


MINI PAK'R™ Air Cushion Machine

OPTIONAL WALL MOUNT

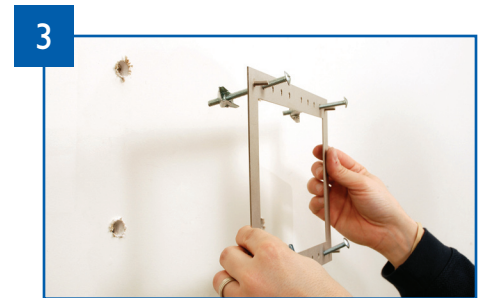
When space is an issue, use the optional Wall Mount kit to install the MINI PAK'R™ machine above the work area. Kit includes wood screws, concrete anchors and toggle bolts so it can be used on any wall surface.



1 Hold the base plate up to the wall at the desired height and adjust position so the top surface is level (a leveling tool or tape measure is required). With a pencil mark four drill hole locations on the wall.



2 Drill pilot holes for the chosen type of wall mounting bolts.



3 Install the base plate with mounting bolts and firmly tighten the mounting bolt into the wall.



4 Mount the Wall Mount Bracket to the Mini Pak'r machine. Use Socket Head Screws to attach the MINI PAK'R machine to the Wall Mount bracket.



5 Position the Wall Mount Bracket on the Wall Anchor Plate studs.



6 Install and tighten the hex nuts.

www.fpintl.com
877-594-5160

FP
INTERNATIONAL®
INVENTING THE FUTURE OF PACKAGING